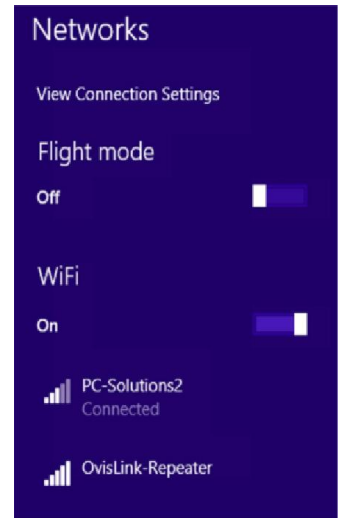




# OvisLink Universal Wifi Extender Installation Instructions

Evo-W315R

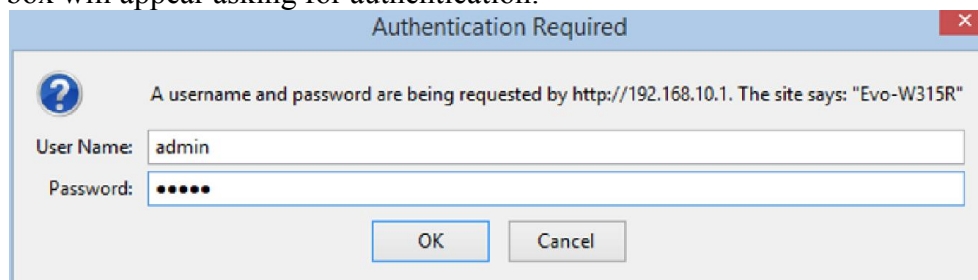
1. Plug the extender into an electrical wall socket close (i.e. in the same room) to your existing wireless router.
2. Using your wireless-enabled computer look at the wifi networks available to you. You should see a new one called “OvisLink-Repeater” or similar. Click on this network and connect – if it asks for a password use 12345678



3. Open a web browser (Internet Explorer, Mozilla Firefox, etc.) and in the address bar at the top type 192.168.10.1 then press the “Enter” key.

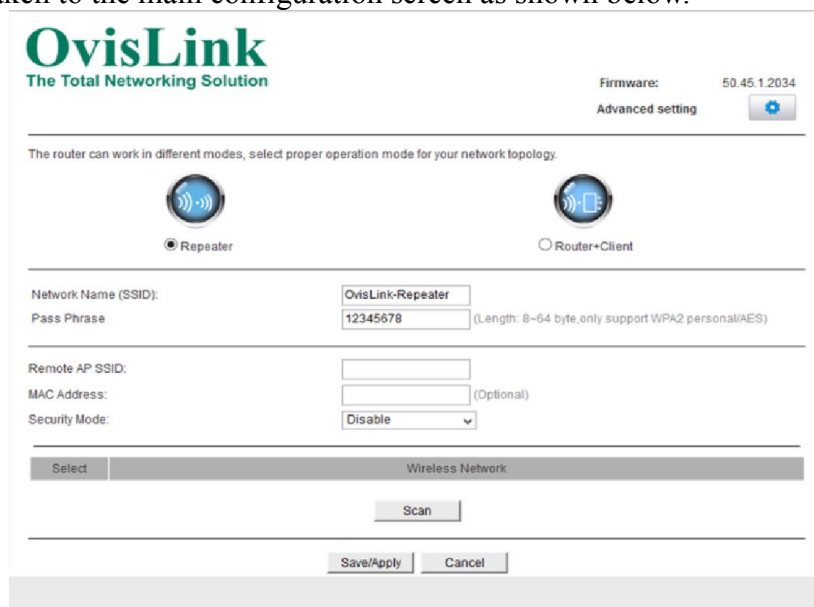


4. A pop-up box will appear asking for authentication.



Type the username and password, which are both “admin” (without the quotes) and click on “OK”.

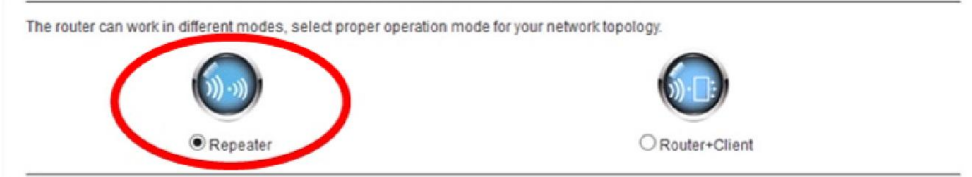
5. You'll then be taken to the main configuration screen as shown below.



# OvisLink Universal Wifi Extender Installation Instructions

## Evo-W315R

6. Make sure the option for “repeater” is selected. If not, click on this option to select it.



7. Change the Network Name (SSID) from “OvisLink-Repeater” to something meaningful to you (this will become the new wifi network you will connect to), and replace the Pass Phrase with something that you will remember. Only use letters and numbers for the Pass Phrase.

Network Name (SSID):

Pass Phrase:  (Length: 8-64 byte, only support WPA2 personal/AES)

In this example we've called ours “NewNetwork” and used the Pass Phrase “Extended1”

Network Name (SSID):

Pass Phrase:  (Length: 8-64 byte, only support WPA2 personal/AES)

8. Once you've done this, click the “Scan” button towards the bottom of the screen.

Network Name (SSID):

Pass Phrase:  (Length: 8-64 byte, only support WPA2 personal/AES)

Remote AP SSID:

MAC Address:  (Optional)

Security Mode:

Select  Wireless Network

9. All available wireless networks will be detected. You can chose the correct one for the wifi extender to connect to.

Remote AP SSID:

MAC Address:  (Optional)

Security Mode:

Encryption Type:

Pass Phrase:

Select  Wireless Network

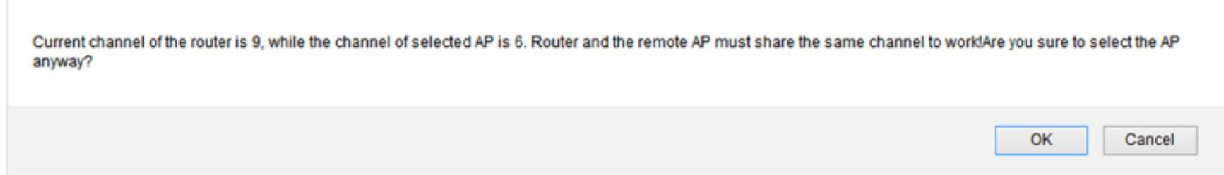
|                                  |  |   |  |
|----------------------------------|--|---|--|
| <input checked="" type="radio"/> |  | <b>PC-Solutions</b> (00:1b:2f:bb:11:09)<br>Channel - 6 (Frequency - 20MHz), Network Mode - 11b/g (Infrastructure)<br>Security enabled wireless network (WPA/PSK/TKIP) |  |
| <input type="radio"/>            |  | <b>PC-Solutions2</b> (00:1e:2a:dc:67:65)<br>Channel - 11 (Frequency - 20MHz), Network Mode - 11b/g (Infrastructure)<br>Security enabled wireless network (WEP)        |  |

Click on the dot next to the name of your existing wifi network. The fields above (circled in green) will filled in automatically.

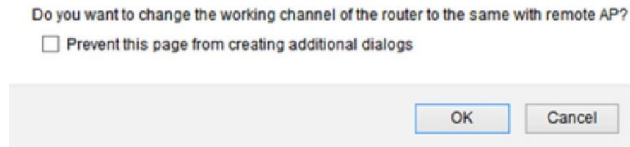
# OvisLink Universal Wifi Extender Installation Instructions

## Evo-W315R

10. If the following pop-up box appears, click on “OK”. If it does not, go to step 12.



11. If this pop-up box appears click on “OK”.

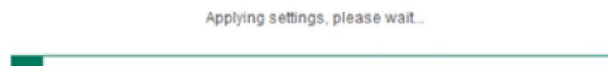


12. Enter the password for your existing wifi network.

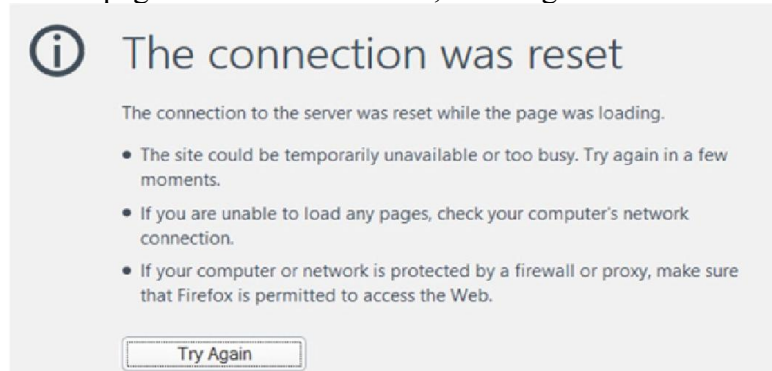
|                      |  |
|----------------------|--|
| Network Name (SSID): | <input type="text" value="NewNetwork"/>  |
| Pass Phrase          | <input type="text" value="Extended1"/> (Length: 8~64 byte, only support WPA2 personal/AES) |
| Remote AP SSID:      | <input type="text" value="PC-Solutions"/>  |
| MAC Address:         | <input type="text" value="00:1b:2f:bb:11:09"/> (Optional)                                  |
| Security Mode:       | <input type="text" value="WPA Personal"/>  |
| Encryption Type:     | <input type="text" value="TKIP"/>  |
| Pass Phrase:         | <input type="text"/>   |

| Select                           | Wireless Network  |
|----------------------------------|---|
| <input checked="" type="radio"/> | <b>PC-Solutions</b> (00:1b:2f:bb:11:09)<br>Channel - 6 (Frequency - 20MHz), Network Mode - 11b/g (Infrastructure)<br>Security enabled wireless network (WPA2PSK/TKIP) |
| <input type="radio"/>            | <b>PC-Solutions2</b> (00:1e:2a:dc:67:65)<br>Channel - 11 (Frequency - 20MHz), Network Mode - 11b/g (Infrastructure)<br>Security enabled wireless network (WEP)        |

13. Click the “Save/Apply” button towards the bottom of the screen. All the setting you have entered will now be saved in the wifi extender.



14. Once the settings have been successfully saved you will be disconnected from the wifi repeater and your web browser will show a page similar to that below, showing that it cannot connect to the internet.



# OvisLink Universal Wifi Extender Installation Instructions

Evo-W315R

15. Unplug the wifi extender from the wall socket and plug it in to a socket in its new location. Using any wifi enabled device, look at the list of available wifi networks. You will find your new wifi network shown in the list – in our case it's “NewNetwork”.

Click on the network name and connect. Use the password you created in step 7.

